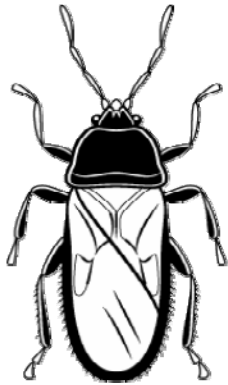


Grow It Green

Natural Lawn Care Newsletter

IS SOMETHING BUGGING YOUR LAWN?



Chinch Bug Damage

Chinch bugs are small crawling insects that eat the blades of grass. They feed throughout the hot summer months, creating dead, sunken areas throughout your lawn, especially near sidewalks, pathways or gardens. Damage appears in late July and August. Monitoring your lawn throughout the summer will help ensure that your lawn stays healthy.

How to Monitor

If you suspect you have chinch damage, test using these steps:

1. Cut off both ends of a large can, such as a large coffee can, to create a metal tube.
2. Select a section of healthy grass near to a damaged area. Push the can halfway down into the lawn.
3. Fill the can with water and wait a few minutes to see if chinch bugs float to the top.
4. If you count 20 or more chinch bugs, you may need to take action.
5. Repeat in several sections of your lawn.

Stop the Spread

Water deeply once a week to help discourage chinch bugs.

Repair and Prevent

In the fall, repair the damaged areas with triple mix and a fescue and perennial ryegrass mixture, which is more resistant to chinch.

For more information and other helpful lawn care tips visit
www.letscurbpesticides.ca



For more information visit www.letscurbpesticides.ca
Brought to you by the Region of Waterloo and area municipalities